

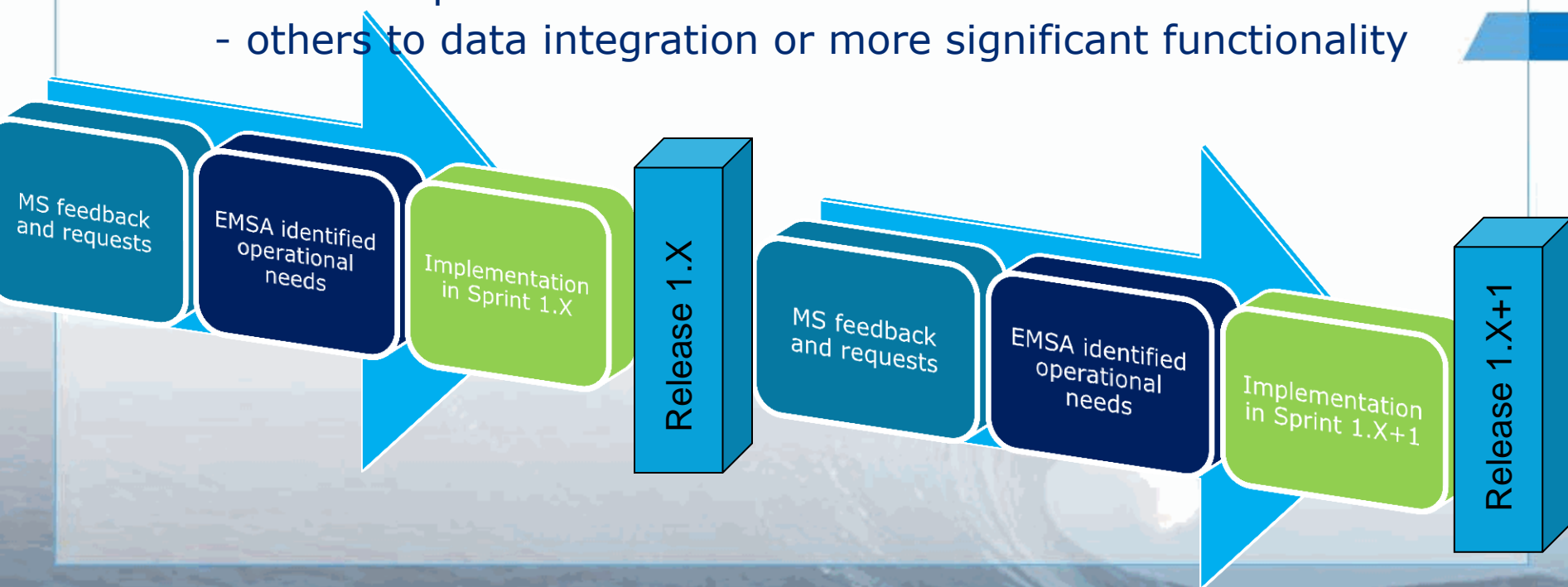
IMDatE User Workshop

- Releases and New Functionalities**

Lisbon, 7 May 2014

Justino de Sousa
Oscar Rodriguez Villaamil
Andrea Pelizzari

- Smaller but more frequent software updates
- Incorporation of new requests and requirements into future development pipeline
- As requests come in we try to give higher prioritisation to features that benefit many users.
 - some requests relate to new GUI features
 - others to data integration or more significant functionality



IMDatE Releases

- **Current release** in production is **1.0**.
- Next release is 1.1 and scheduled for mid-June
- Subsequent release is 1.2 and available in September
- Subsequent release is 1.3 and planned for December

IMDatE Releases 1.0

- **Availability of Global satellite AIS from ExactEarth**
 - Through the IMDatE graphical interface
 - Through system-to-system interfaces:
 - i. OGC WMS (Web Map) layer
 - ii. XML based messages

firefox EMSA

https://portal.emsa.europa.eu/group/imdata/wup

Welcome Justino de Sousa!

WUP

Search


Layers

- ☒ Alerts
- ☒ Vessels [Symbolology](#) IALA Colour VTMI
- ☒ Position Source
- ☒ Risk Status
- ☒ Ship Type
- ☒ Navigation Status

Query

Selection Info

Vessel info (center)


MMSI: 305614000
IMO: 9415325
Ship Name: BBC POLONIA
Flag state: Antigua and Barbuda 
Call sign: Y2EZ6
Ship type: General cargo/multipurpose (360)
Identity Source: SSN

Last Position Report

Common Data

Lon: 035°55'55"W
Lat: 21°44'03"N
Transmission Time: 2014-04-30 04:57:03
Speed: 12.5 knots
Heading: 241 degrees
Position Source: Sat-AIS
Originator: ou=satais,dc=ee,dc=com
Navigator: Under way using engine
Status: True Heading: 243 degrees
Validity Flag: Validated

Vessel image



External links

[Marine Traffic Vessel Details](#)

Position reported between the last: 24 h and 0 s

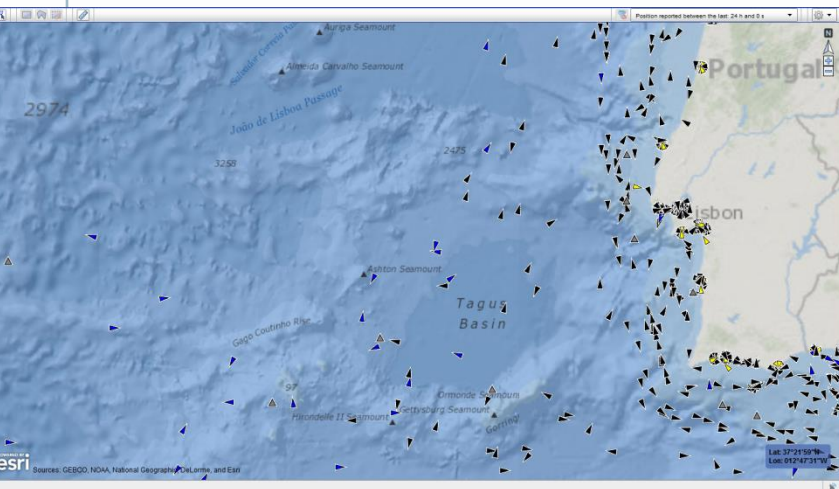
Map showing global data coverage with green and blue dots. The map includes labels for NORTH AMERICA, SOUTH AMERICA, AFRICA, EUROPE, ASIA, AUSTRALIA, and OCEAN. A coordinate box in the bottom right corner shows Lat: 21°01'56"N and Lon: 035°20'40"W.

POWERED BY esri

Sources: GEBQ, NOAA, National Geographic, DeLorme, and Esri

IMDatE Releases 1.0 (cont.)

- **Automated behaviour monitoring**
 - First set of algorithms and alerting options
 - Commissioning and evaluation over a period of months based on feedback from MS.
- **Improvements in the graphical interface**
 - 'clustering' to improve display performance
- **Bug fixes, stability improvements and minor enhancements**



Selection Info

Vessel info (center)

MMSI: 311000220
IMO: 8729506
Ship Name: ARTHUR DION HANINA
Call sign: C6BB9
Ship type: Government ship used for non-commercial purpose (318)
Length: 42 m
Identity Source: AIS

Last Position Report

Common Data

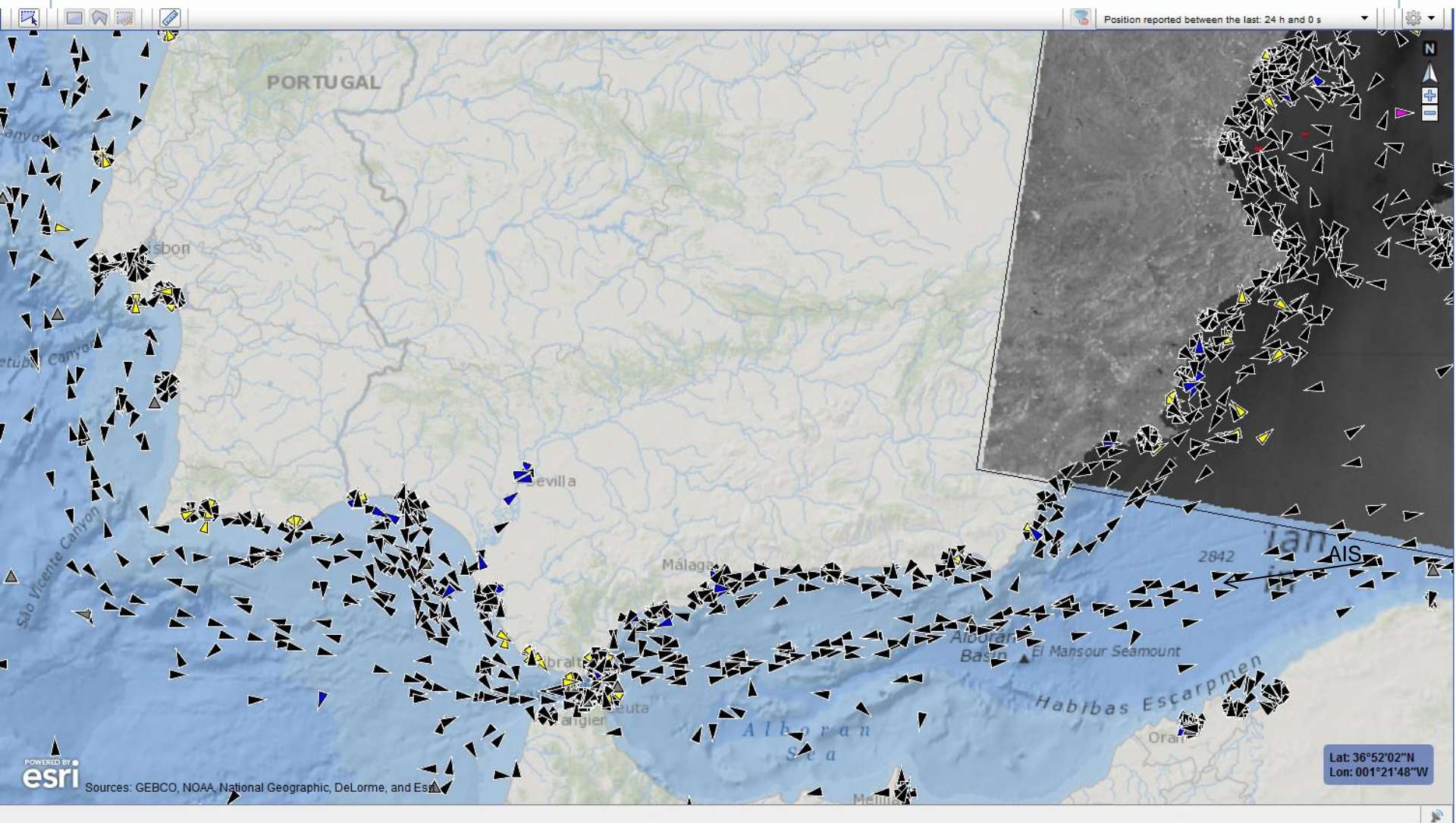
Lon: 024°10'11"W
Lat: 40°15'45"N
Transmission Time: 2014-05-06 09:25:37
Speed: 10.3 knots
Heading: 247.8 degrees
Position Source: Sat-AIS
Originator: ou=satais, dc=ee, dc=com
Navigational Status: Under way using engine
True Heading: 247 degrees
Validity Flag: Validated

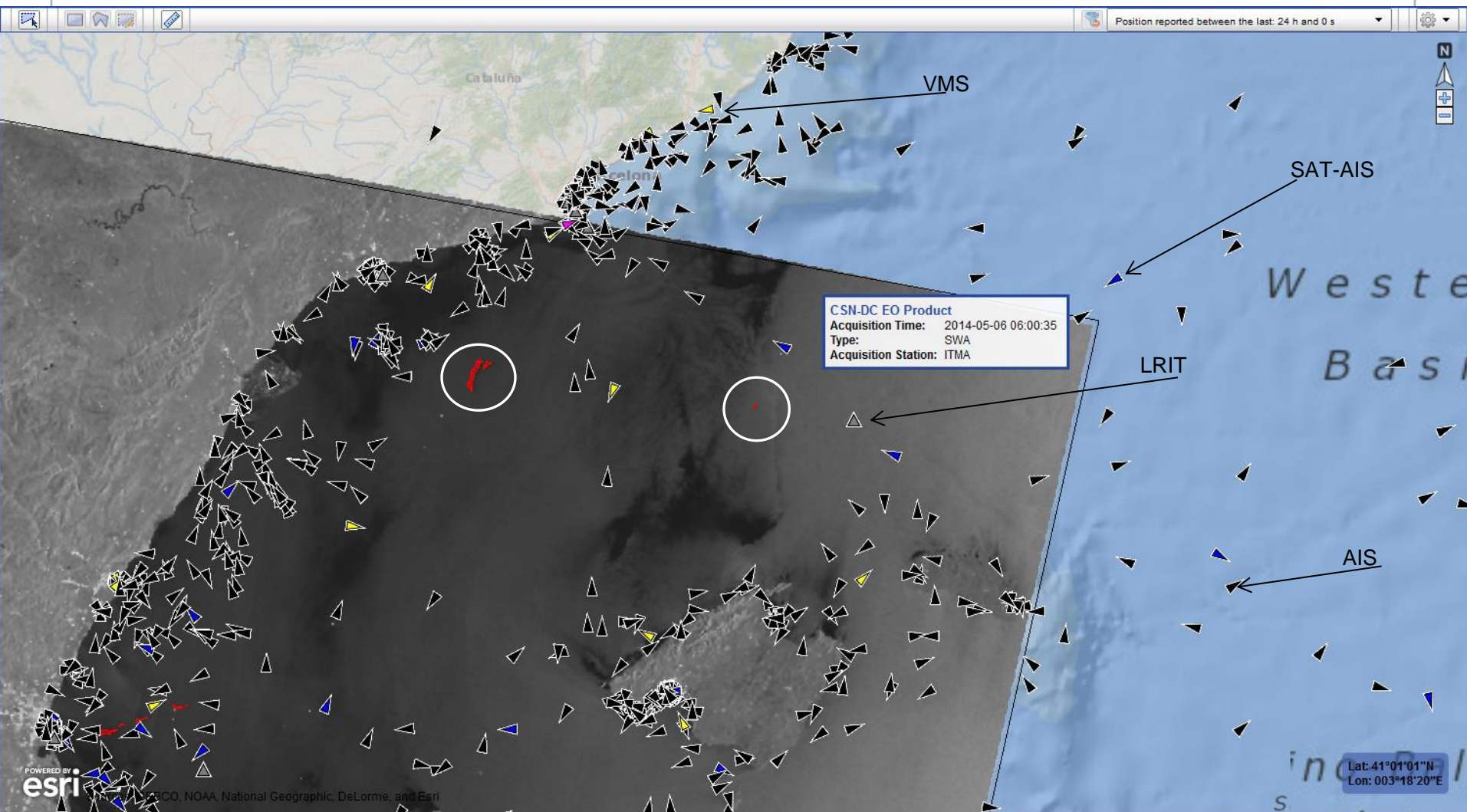
Vessel image



External links







IMDatE Release 1.0 (cont.)

Other improvements not necessarily visible to end users:

- **New services/operations set-up for EFCA fisheries control activities and FRONTEX EUROSUR tasks**
- **More flexibility in managing access rights at EMSA**
 - faster to apply access rights to current and new data sources
 - handling across different services/operations that we customise in IMDatE
- **Distribution service for streaming out vessel position reports**
 - via System-to-System (S2S) interfaces (e.g. XML) to Member States systems for limited data feeds in terms of area and data flow.

IMDatE Release 1.1 – June 2014

- **Enhanced SAR SURPIC**

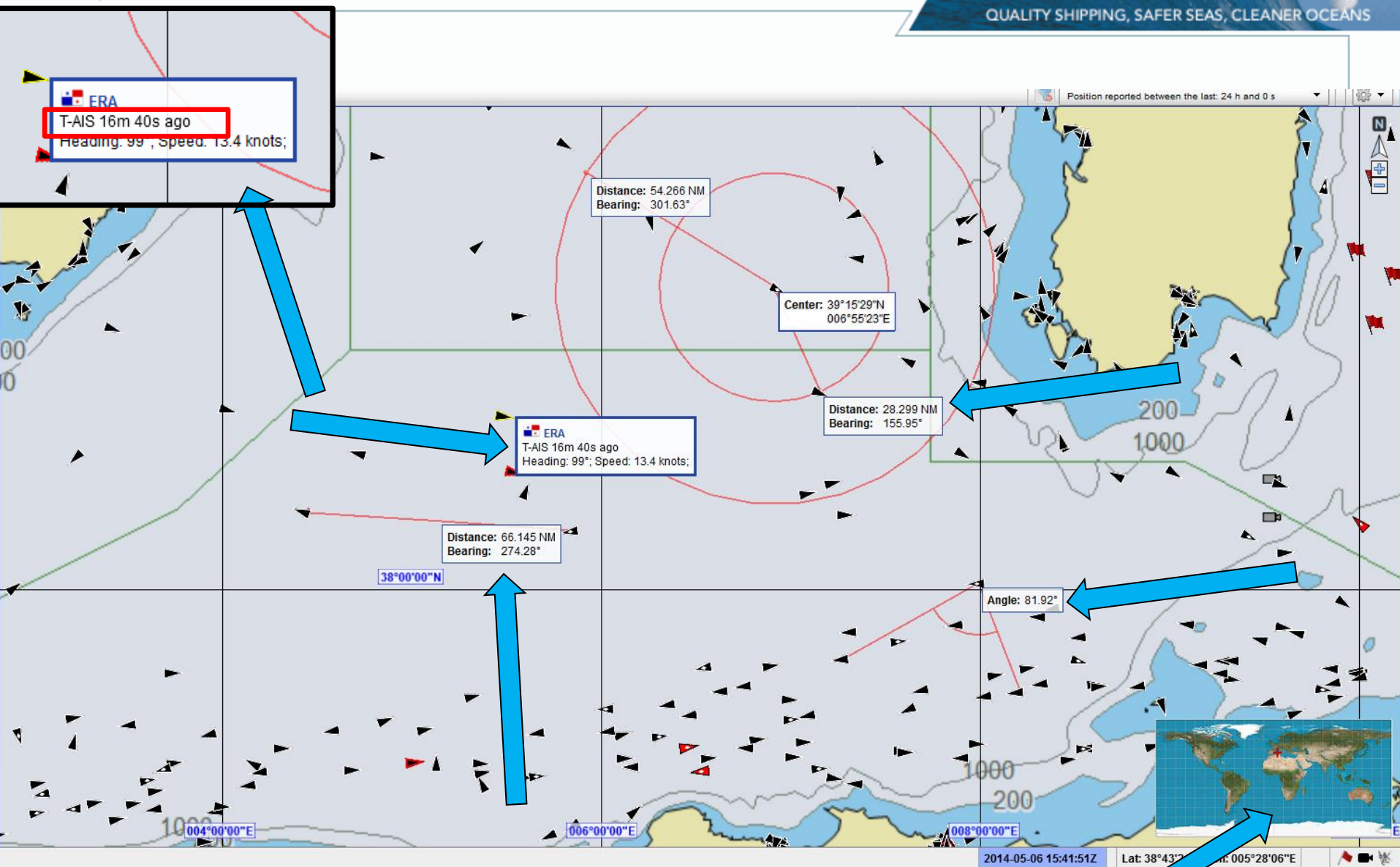
- Activation tool for authorised SAR operators
- Based on AIS, SAT-AIS, LRIT position reports and VMS if available to the MS user.

- **Automated behaviour monitoring**

- additional algorithms to be provided.

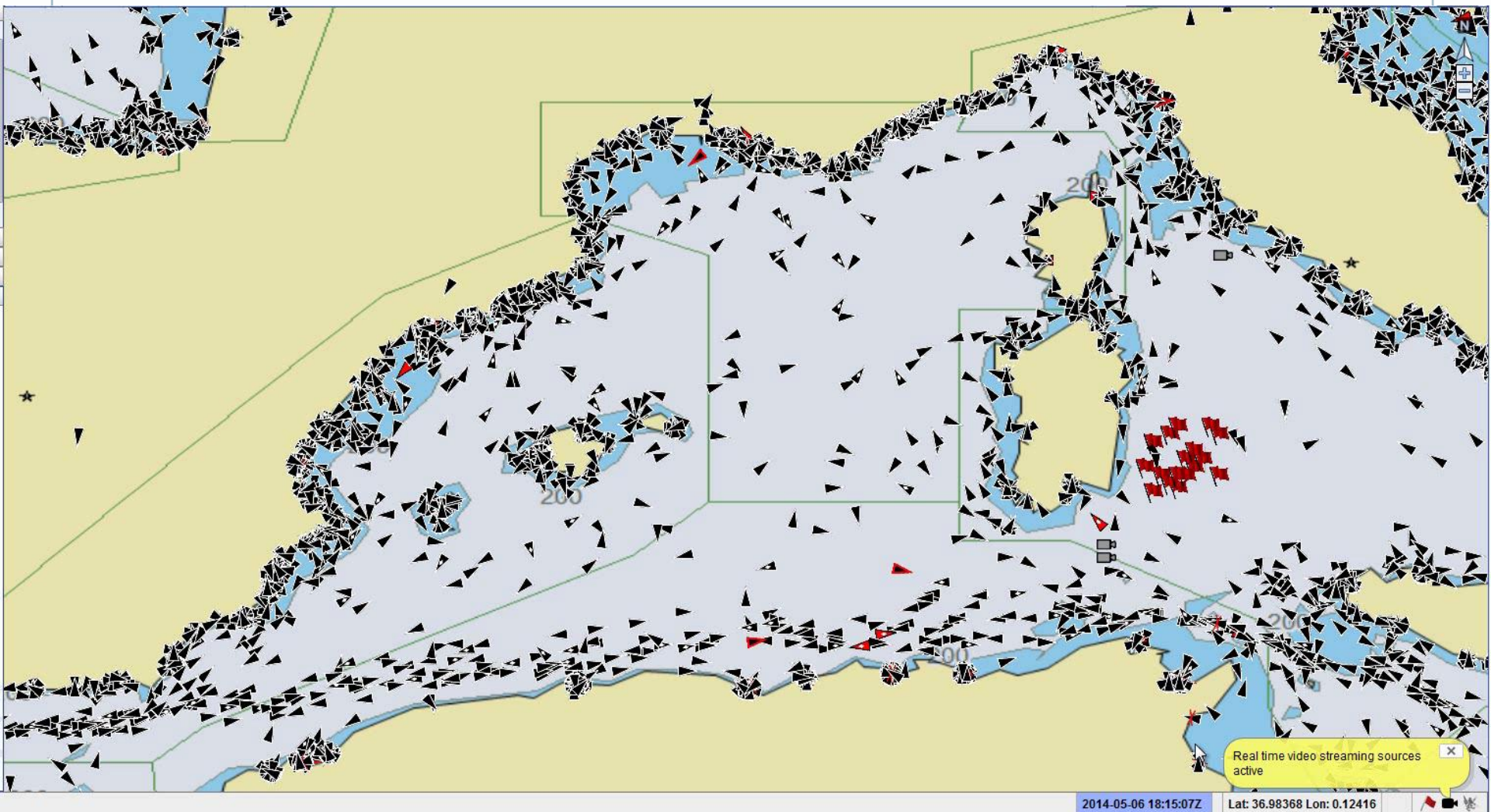
- **New GIS features**

- New options for bearing and distance measurement and range markers.
- Addition of thumbnail map for improved navigation
- Ability to set timestamp values to *local time* or even *relative time* (eg. Transmitted *3h 21mins* ago)
- Ability to customise the display of the track line



IMDatE Release 1.1 (cont.)

- Addition of the SafeTrx leisure boat reports from Ireland and/or other Member States using SafeTrx
- Display of AIS-SART signals (From AIS messages type 1 only)
- Patrol assets
 - In addition to tracking data the possibility to display video streams or information about the onboard sensor/camera.
 - Video streams available at the Member States may be linked to data sets available in IMDatE.



IMDatE Release 1.2 – Sept 2014

Preliminary list:

- SSN voyage information
- SSN Hazmat details request
- Final set of main automated behaviour monitoring algorithms.

IMDatE Release 1.3 – Dec 2014

Preliminary list:

- Display of aircraft AIS reports
- Receipt and processing of coastal radar via IVEF interface
- *Specific requests from the Member States*

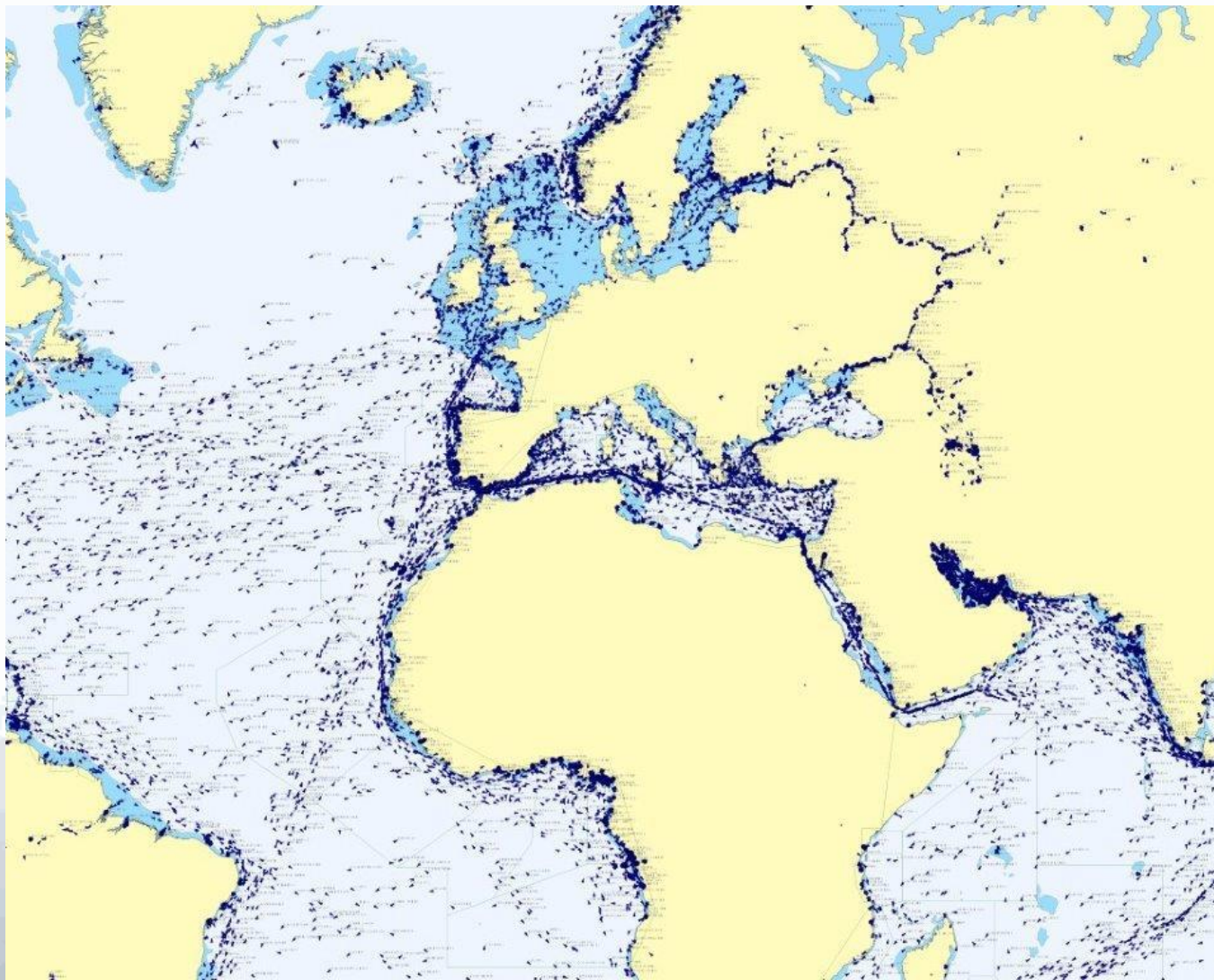
Other issues

- Bug fixes and reliability/robustness improvements
 - EMSA to provide a template to report track issues/software bugs.
- SSN Single Sign-On and common user management
 - Integration completed in June 2014.
- Sharing of common data among applications
 - Common Vessel Database (CVD)
 - Common Authority Database (CAD)

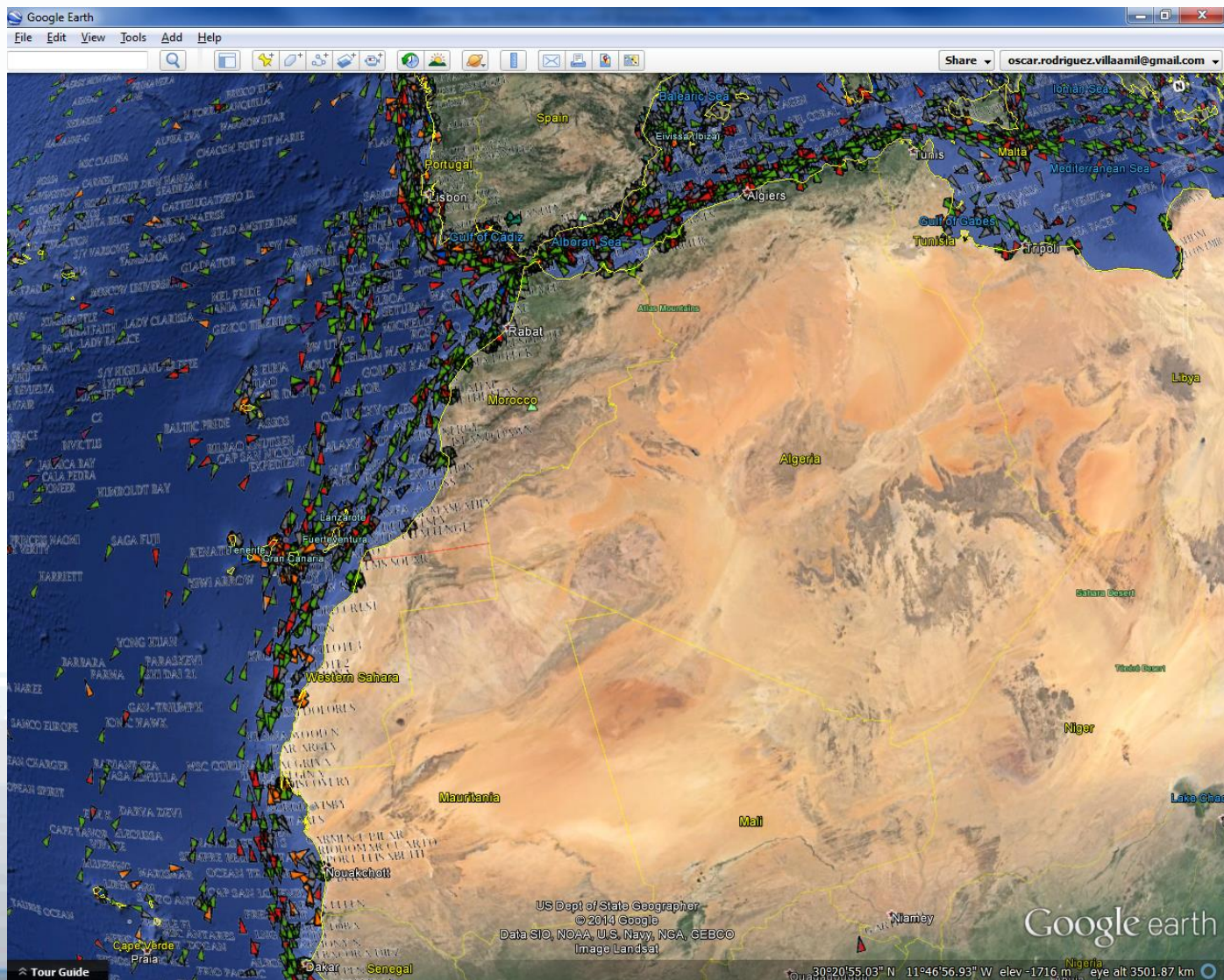
Satellite AIS System-to-System Service

- Last known position service from the available global satellite AIS providers:
 - Exact Earth
 - AIS-Sat 1 from Norway
- Data is available to MS without restrictions
- Widely supported by Geographical Information Systems

Satellite AIS Service



Satellite AIS Service



Access Rights Management

- IMDatE integrates data from several systems with different applicable access rights
- Data protected by a central rule based authorisation engine
- Rules are configured following the policies deriving from Legal or Contractual agreements

Access Rights Management

A user of the IVTMIS from UK can see:

- All T-AIS
- All Satellite AIS
- All flag LRIT from MS participating in IVTMIS pilot
- Coastal LRIT from UK

Access Rights Management

Current version:

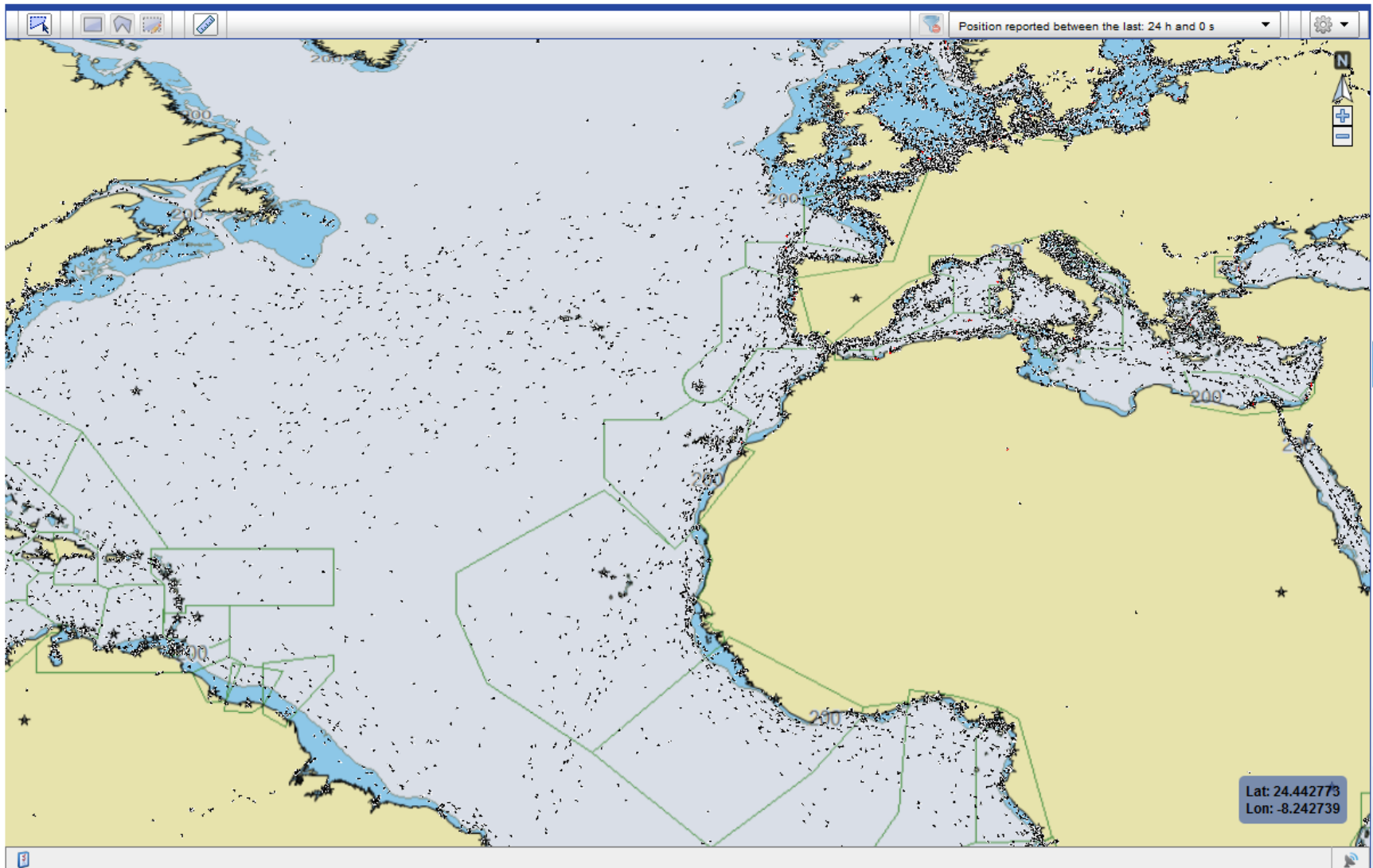
- Vessel Positions
- Behaviour Monitoring

Access Rights Management

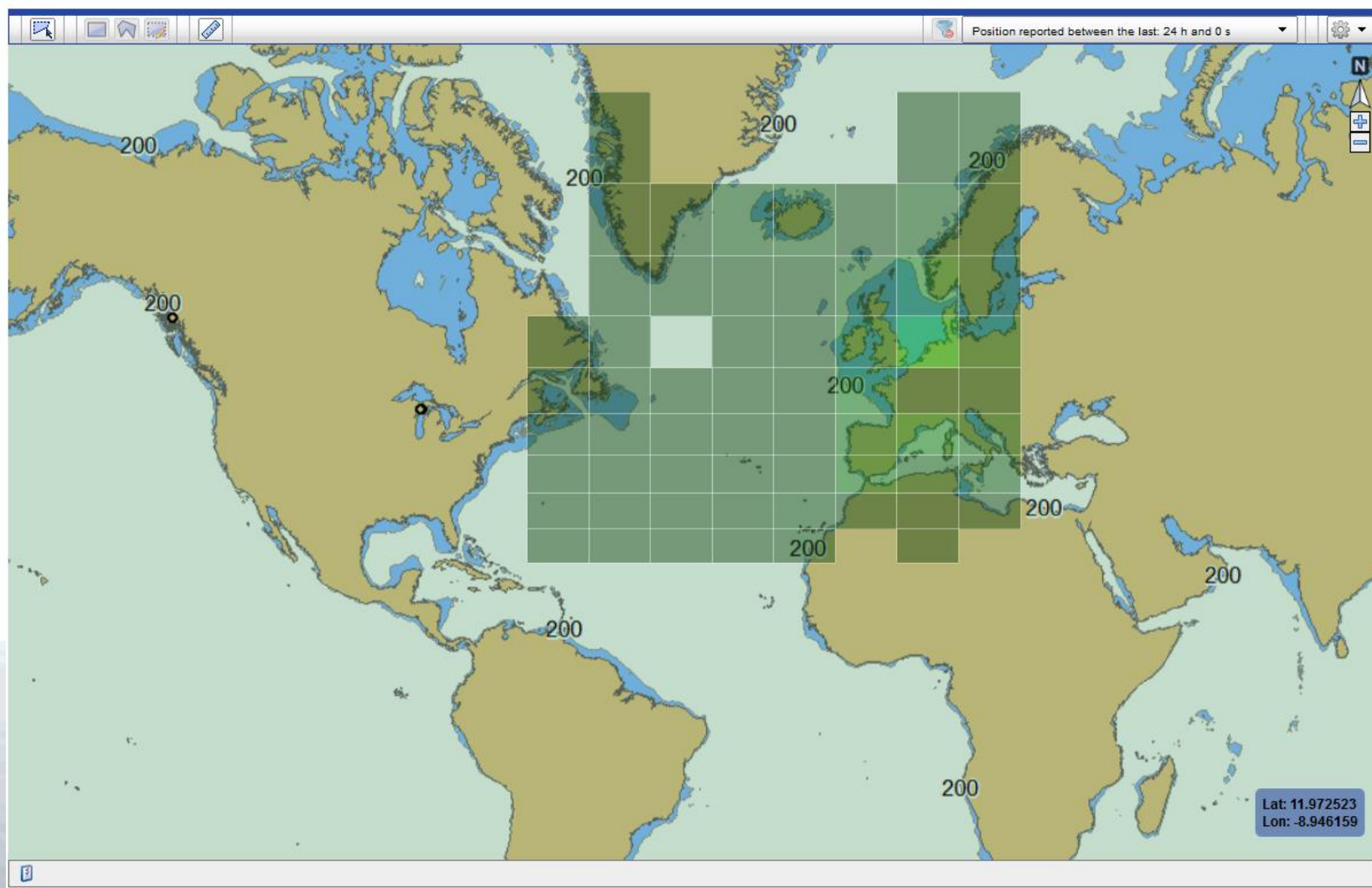
Future versions:

- Earth Observation
- SSN Information
- Web User Interface Graphical Elements

Access Rights Management



Access Rights Management



Access Rights Management

